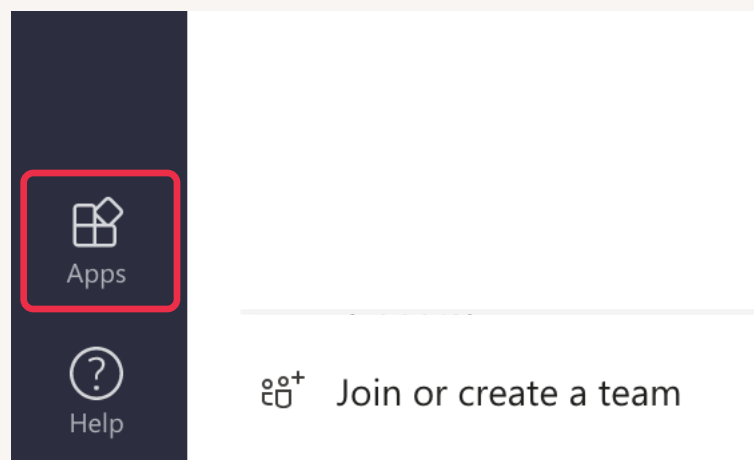




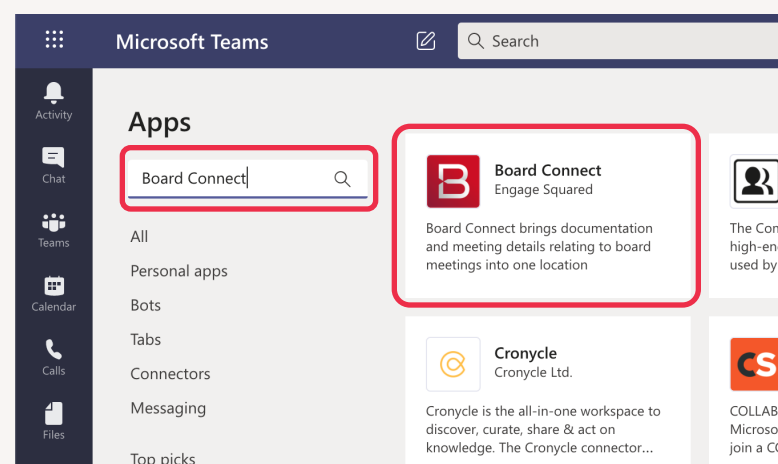
# How to Install Board Connect

 You'll need to be a 'Global Admin' for your Teams Environment

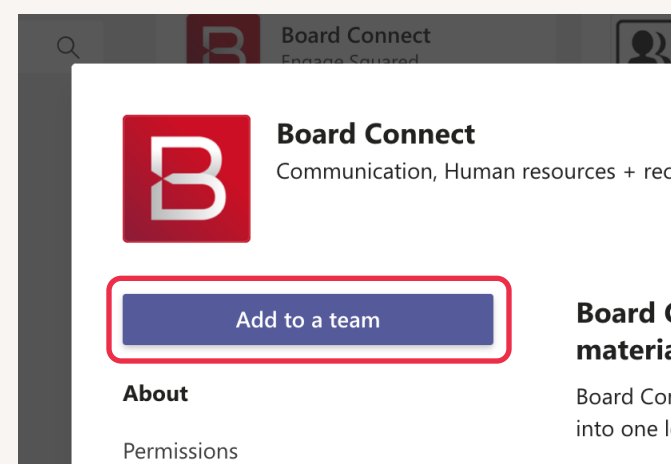
1 From the bottom left corner of the Microsoft Teams toolbar, click **Apps**



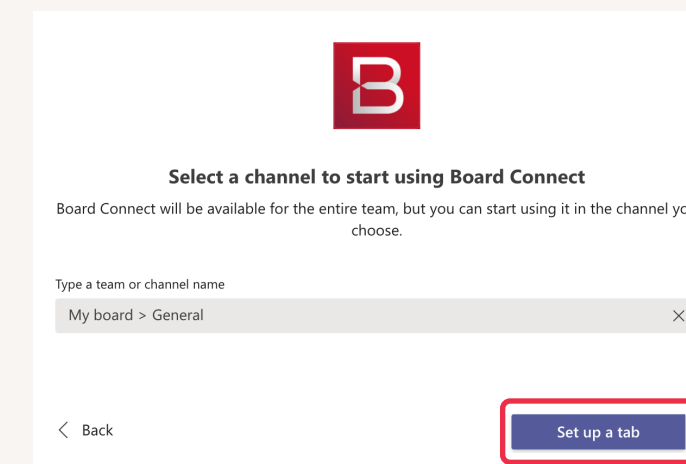
2 Search '**Board Connect**' and select



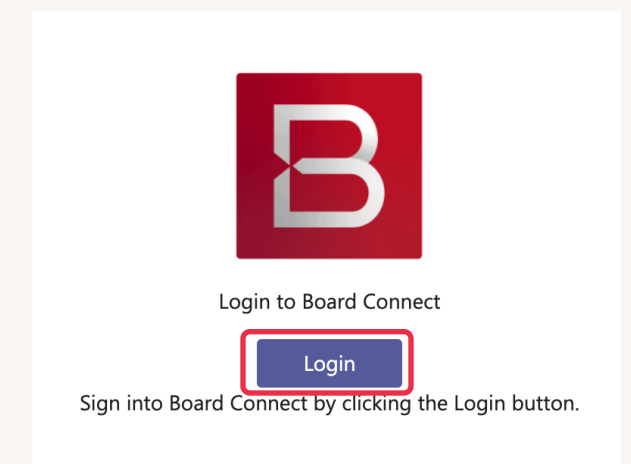
3 Click **Add to a team**



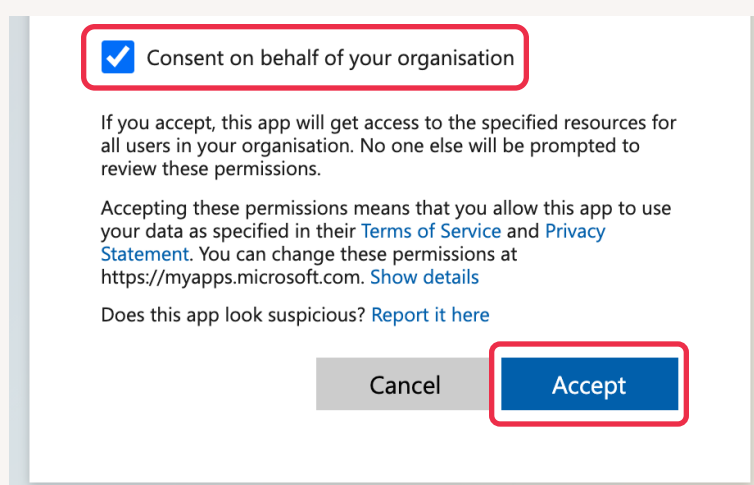
4 Start typing the team or channel name to add BC to, then click **Set up a Tab**



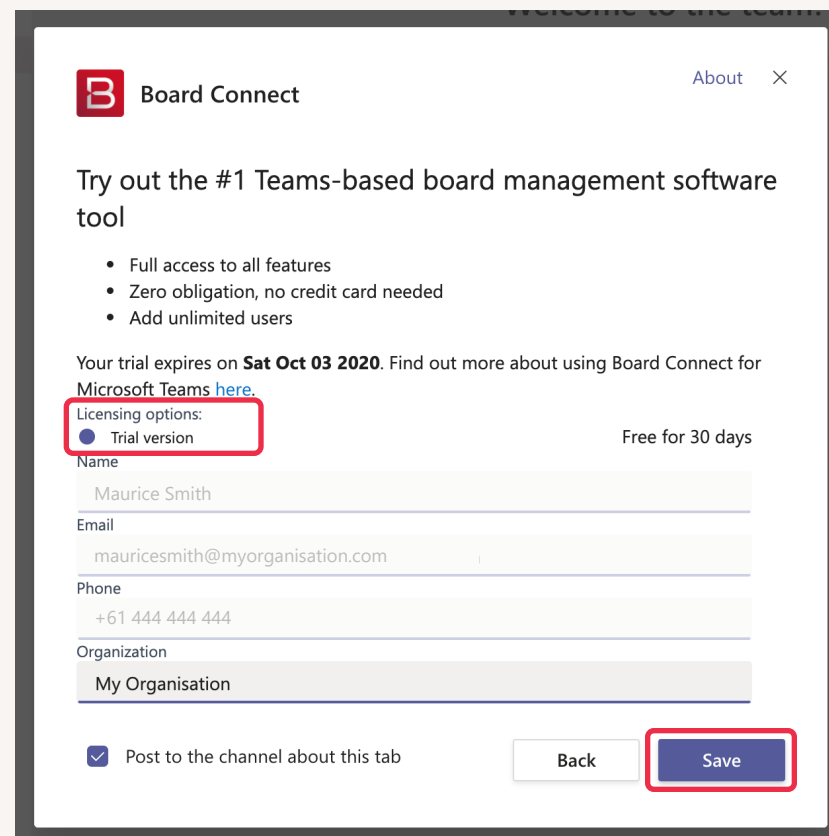
5 Click **Login** and sign in with your Microsoft 365 credentials



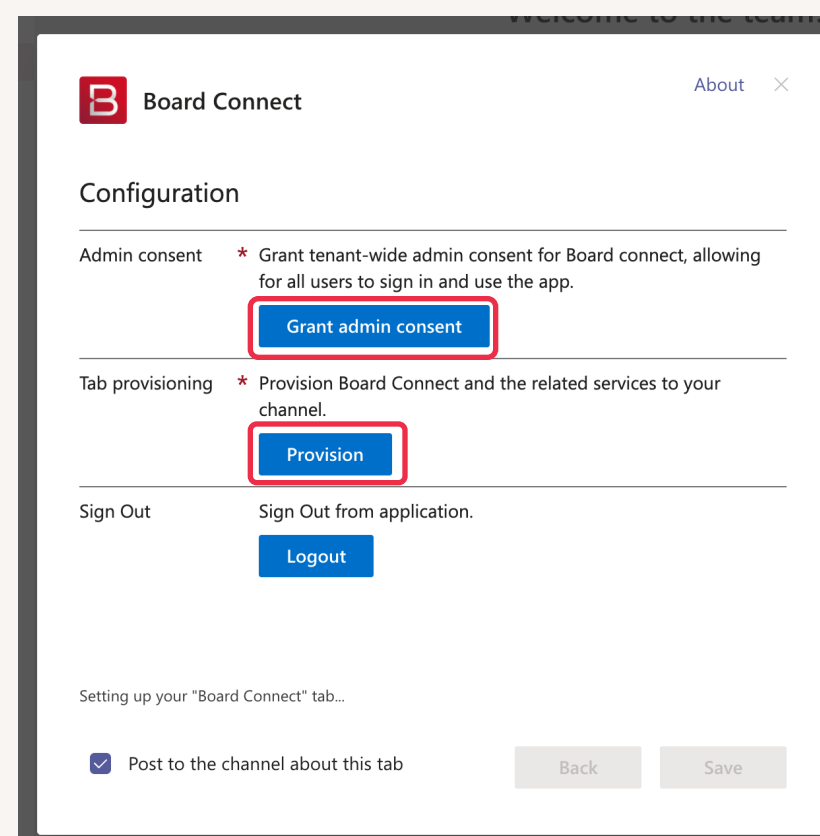
6 In the 'Permissions requested' toolbar, **check the box** 'Consent on behalf of your organisation', then click **Accept**



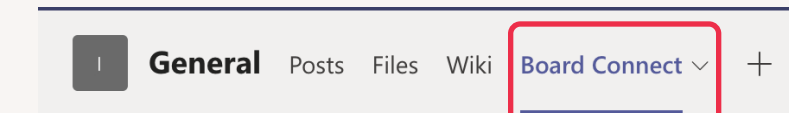
7 **Select 'Trial version'** under licensing options, fill in your contact details and click **Save**



8 Click **Grant admin consent** and select your M365 credentials. Next click **Provision**, then click **Save**



9 The Board Connect tab will be added to your selected team channel.



10 You can add Board Connect to any team. Click the **+ tab** in your selected team channel and search Board Connect

